



ARTESIAN SPAS™  
EXPERIENCE THE ULTIMATE



Island Spas™

# ADVANCED TECHNOLOGY



## GREEN TECHNOLOGY MEANS ENERGY EFFICIENCY

You can relax knowing that luxury and high performance does not mean increased energy consumption and higher costs. This line of spas uses an energy-efficient circulation system and motors, that deliver high performance and reliability. This makes Island Spas more efficient than any traditionally-built spa in the industry.



### Environmentally Conscious

- Our maintenance free, synthetic Kingwood cabinets do not rust or warp, reducing the need for replacement.
- High density Icynene® foam fills the space between the cabinet and the shell providing the highest level of insulation possible.
- Our upgraded ProGuard spa covers offer the best heat retention available.



### Environmentally Friendly Water Treatment

- The Crystal AOP™ option is the natural way to obtain a crystal clean spa. Using a combination of the Nature2® option, Microfiltration, high efficiency Circulation Pump, UVC, Ozone and ProPure™ Mixer, we are able to achieve maximum water clarity while using far fewer chemicals.
- The Crystal ProPure™ option combines the use of the Nature2® option, Ozone Generator, Mazzei Injector, and the ProPure™ Mixing Chamber to concentrate the water purification process.
- The FROG® @ease™ In-line System is the combination of Fresh Mineral Water™ and SmartChlor™ Technology providing self-regulating, cleaner, clearer and softer spa water that's far easier to take care of.

### WhisperPure™ Circulation System Benefits

- The WhisperPure™ Circulation System circulates water through the micro filters and the heater up to 100 times a day. It delivers clean, regulated water 24 hours a day with a low operating cost.

## HELIX INSPIRED: A New Spin on Spa Jets

The Island Spas line features a revolutionary breakthrough in hydrotherapy jetting that makes use of the timeless concept of a helix, a curve in three-dimensional space such as that found in a spiral staircase. This Artesian Spas patented jet design provides a truly remarkable hydro-massage. Engineered with the concept of the double helix in mind, the jets use a right-directional spiral on the inside of the cylinder. This causes water to spiral out in a twisting motion, providing jet pulsation and heightened massage pressure.

The two largest helix jets, named **ProHelix™**, provide a high volume of water to massage large muscles in the body. The midsize helix jet, called **TheraHelix™**, is strategically placed in the spa in small groups to massage muscles such as the calves, hamstrings, deltoids, biceps, and triceps. The smallest helix jet, the **AccuHelix™**, is placed in large groupings to massage larger regions of the body, such as the entire back. As a complete system, four to five different sizes of helix jets are featured in every Island Spas model.



# Island Spas™



**Santa Cruz**



**Nevis**



**Antigua**



**Captiva**



**Barbados**

## REDEFINING CRAFTSMANSHIP & PERFORMANCE

The Island Spas line provides a series of models that range from 32 jets to 72 with attractive options and features that allow your very own, one-of-a-kind, personalized retreat. From multiple configurations to top rated features, such as the Pillowfall, Double Footblaster, and the Tranquility Fall – your ideal island retreat is yours to create.

Pumps are rated at Brake Horse Power (BHP). BHP is a maximum value measured by the motor manufacturer with no load applied.

Dry weight is shipping weight, including package and wooden runners. Dimensions, capacities and weights are approximate.

Specifications are subject to change without notice. Spa images have been digitally rendered and may or may not show optional features.



**Grand Cayman**



**Grand Bahama**



**Isla Margarita**



**Bimini**

# Island Spas ELITE

Powered by DirectFlow Technology



**Antigua ELITE**



**Captiva ELITE**



**Grand Bahama ELITE**



**Grand Cayman ELITE**



**Isla Margarita ELITE**

## Specifications

Seating Capacity	6	
Dry Weight	845 lbs	383 kg
Filled Weight	3845 lbs	1744 kg
Water Capacity	375 gal	1419 L

Jets	Pumps : 1-Speed
55 Dual Footblaster	One 6.0 BHP Two 3.0 BHP

## CAPTAIN SEAT PERSONAL CONTROL

### CUSTOM MASSAGE SEATS | MORE EFFICIENT | REDUCES OPERATION COST

Island Spas Elite models combine the traditional water delivery system and diverter valve with the patented DirectFlow® Technology from Artesian Spas top-of-the-line models, the Platinum Elite Spas.

The innovative DirectFlow® direct plumbing system combined with the Variable Flow Control (VFC) provides the user the ultimate individual control and hydrotherapy experience possible.

# Island Spas ELITE™

Powered by DirectFlow Technology

## CAPTAIN SEAT PERSONAL CONTROL

# Antigua ELITE

84 x 84 x 36 in.  
213 x 213 x 91 cm



55 Dual Footblaster | Acrylic: White Pearl



## CAPTAIN SEAT PERSONAL CONTROL

# Captiva ELITE

84 x 84 x 36 in.  
213 x 213 x 91 cm



55 Dual Footblaster | Acrylic: White Pearl



## Specifications

Seating Capacity	7	
Dry Weight	845 lbs	383 kg
Filled Weight	4045 lbs	1835 kg
Water Capacity	400 gal	1514 L

Jets	Pumps : 1-Speed
55 Dual Footblaster	One 6.0 BHP Two 3.0 BHP

## CAPTAIN SEAT PERSONAL CONTROL



# Island Spas ELITE™

Powered by DirectFlow Technology

## Specifications

Seating Capacity	6	
Dry Weight	947 lbs	430 kg
Filled Weight	4547 lbs	2062 kg
Water Capacity	450 gal	1703 L

Jets Pumps : 1-Speed

65 Dual Footblaster One 6.0 BHP  
Three 3.0 BHP

## CAPTAIN SEAT PERSONAL CONTROL

**Pump Switch**  
Turn Individual Seat Pump On/Off



**Air Control**  
Air Pressure Adjustment

**Variable Flow Control**  
High or Low Jet Pressure

**THE POWER OF MASSAGE CAN BE INDIVIDUALLY REGULATED** by the sophisticated Island Spas Elite design and engineering of two individual **CAPTAIN SEATS**.

# Island Spas ELITE™

Powered by DirectFlow Technology

## CAPTAIN SEAT PERSONAL CONTROL

# Grand Bahama ELITE

91 x 91 x 36 in.  
231 x 231 x 91 cm



65 Dual Footblaster | Acrylic: White Pearl





## CAPTAIN SEAT PERSONAL CONTROL

# Grand Cayman ELITE

91 x 91 x 36 in.  
231 x 231 x 91 cm



65 Dual Footblaster | Acrylic: White Pearl



## Specifications

Seating Capacity	7	
Dry Weight	947 lbs	430 kg
Filled Weight	4742 lbs	2153 kg
Water Capacity	475 gal	1798 L

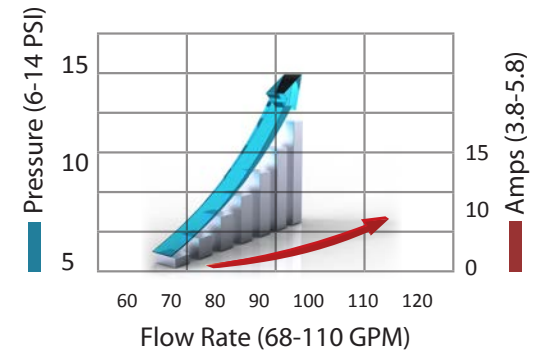
Jets	Pumps : 1-Speed
65 Dual Footblaster	One 6.0 BHP Three 3.0 BHP

## CAPTAIN SEAT PERSONAL CONTROL

*No other spa can give you the DIRECTFLOW® personal control!*

### • YOU CONTROL •

Custom and Wide Range of Pressure, Flow Rate, and Motor Power (Amperage Draw)



# Island Spas ELITE™

Powered by DirectFlow Technology

## Specifications

Seating Capacity	9	
Dry Weight	1000 lbs	454 kg
Filled Weight	2064 lbs	4551 kg
Water Capacity	550 gal	2082 L

Jets	Pumps : 1-Speed
67 Dual Footblaster	One 6.0 BHP Three 3.0 BHP

## CAPTAIN SEAT PERSONAL CONTROL

### Island Spas Model

#### NEW FEATURES | CUSTOM MASSAGE SEATS | MORE EFFICIENT

The 8 x 9 foot Isla Margarita Elite model offers DirectFlow® controls plus new, enhanced features:

- A **Circular Bench** is molded seamlessly into the organic spa design and offers additional seating for a total of 9 seats.
- **Hand Massage Tracks** are integrated into the hydrotherapy seat and the lounger. These tracks, with pearl sized rounded nodes target reflexology points that rejuvenate tired hands and boost circulation.

# Island Spas ELITE™

Powered by DirectFlow Technology

## CAPTAIN SEAT PERSONAL CONTROL

# Isla Margarita ELITE

108 x 91 x 36 in.  
274 x 231 x 91 cm



67 Dual Footblaster | Acrylic: Silver Marble



# ADVANCED DIGITAL CONTROL SYSTEM

WiFi Enabled | Color Graphics | Multiple Languages | Easy to Use | Diagnostics

Artesian Spas' next generation spa control system takes spa control to a whole new level. The sleek new design includes a large, easy-to-read back-lit LCD screen, and easy to follow menus. With a simple download from Apple's App Store and Google Play for Android devices, you now have the ability to control your spa system wirelessly!



## WORLDWIDE WIFI APP MODULE

The Worldwide App Module option, allows you to access your hot tub using an app on your smart device (Android™ or iPhone®) via a direct connection anywhere in the local proximity of your tub. Gain access anywhere in your house that you can connect to your local WiFi network, or anywhere in the world you have an internet connection to your smart device via 3G, 4G, or WiFi hot spots.

With the app, you can ensure that your hot tub will be ready whenever you want to take a dip. The App provides full interface control so you can set the temperature, turn pumps on and off and even set filtration cycles - all from your smartphone or tablet.

\*The app's cloud access cost is free for the 1st 12 months and then \$24 per year after. If not renewed after 12 months, the app will continue to operate in local mode only. \*WiFi module purchased separately.



## STEREO OPTIONS

### ❖ bba™ Bluetooth Audio

Bluetooth Audio Streaming, Fully integrated into the Spa Control Panel, allowing you to control your music from the spa to any smart device, (4) 3 in. Speakers, Subwoofer  
Optional (2) 3 in. Patio Speakers



### ❖ Premium Infinity® Sound System by Harman

Bluetooth Receiver, USB and Aux Input, AM/FM, (4) 3 in. Speakers, (2) 6.5 in. Exterior Speakers, Power Subwoofer  
Optional Wireless Remote

### ❖ Bluetooth® Music Experience

Bluetooth Receiver, AM/FM, USB, Aux-in, (4) 3 in. Speakers, Subwoofer  
Optional (2) 3 in. Patio Speakers





# Revitalize Refresh Restore

SKIN REJUVENATION WITH

# MICROSILK®

## WHY ARE MICRO-BUBBLES EFFECTIVE?

The MicroSilk Option enhances the spa experience by creating a luxury oxygen-rich, micro bubble massage that works double time as a deep cleansing and rejuvenating system.

With a simple push of a button, the tub quickly starts to fill up with micro bubbles that appear as a white cloud. The white appearance comes from the billions of anions in each bubble. Anions are the negative charged particles that create the euphoric feeling similar to those found at the base of a waterfall. It is this bubble releasing of the anions that creates a mist and bubbling effect.

Being that these micro bubbles are smaller in size than pores on the skin, it allows dirt to be swept away by the ultra fine bubbles leaving a smooth and silky feeling and providing the following benefits:

- **Increased Hydration** - Increased oxygen results in cellular respiration
- **Enhanced Skin Cell Growth** - Oxygen improves collagen strength
- **Therapeutic levels of anions** - Shown to reduce scars and reduce skin irritations

ANTIGUA 45



Two 4.8 BHP 1-Speed 9A

ANTIGUA 33



Two 3.0 BHP 1-Speed 6.4A

CAPTIVA 46



Two 4.8 BHP 1-Speed 9A

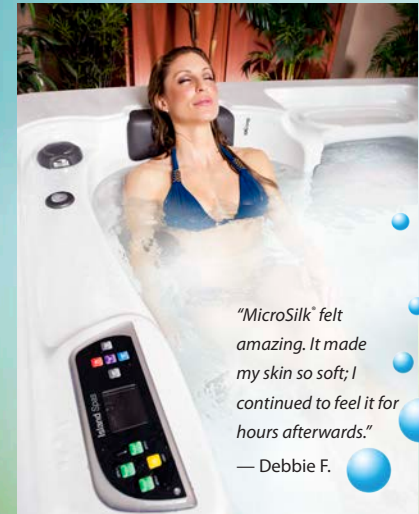
CAPTIVA 33



Two 3.0 BHP 1-Speed 6.4A

THE BEAUTY OF MICROSILK® blankets your entire body with billions of oxygen-rich micro bubbles, all the while, giving your skin a luxuriously silky feeling. **MOISTURIZE AND CLEANSE AT THE SAME TIME.** The Micro bubbles enter the pores and lift away any impurities found in the skin, while plumping, hydrating and reducing fine lines and wrinkles. **AN OXYGEN-RICH BATH IS GOOD FOR YOUR HEALTH,** increasing the oxygen levels in the water up to 70%, improving collagen production. **THE POSITIVES OF NEGATIVELY CHARGED IONS,** improves serotonin levels, neutralizing free radicals, while relaxing both the mind and the body.

## Oxygen-Rich Micro Bubble Mist Effect



*"MicroSilk" felt amazing. It made my skin so soft; I continued to feel it for hours afterwards."*  
— Debbie F.



Soaking No pump Or jets on	MicroSilk®	Air Jets Blower on	Whirlpool Jets Pumps on
----------------------------------	------------	-----------------------	----------------------------

# Santa Cruz

84 x 61 x 32 in.  
213 x 155 x 81 cm



33 Santa Cruz | Acrylic: White Pearl



## Specifications

Seating Capacity	3	
Dry Weight	618 lbs	280 kg
Filled Weight	2418 lbs	1097 kg
Water Capacity	225 gal	852 L

Jets	Pumps : 1-Speed
33	Two 3.0 BHP

## The Perfect Fit

The Santa Cruz is an economical and intimate spa that provides soothing therapy at a reasonable cost without sacrificing quality and comfort. The ergonomically contoured lounger provides a full-body massage while offering two guests their very own personal massage seat. This versatile, three-person spa is ideal for anyone or any small space indoors or out — it's the perfect fit!



## Specifications

Seating Capacity	6	
Dry Weight	769 lbs	349 kg
Filled Weight	3249 lbs	1474 kg
Water Capacity	310 gal	1173 L

Jets	Pumps : 1-Speed
45	Two 4.8 BHP
45 Dual Footblaster	Two 4.8 BHP One 3.0 BHP
44 Single Footblaster	One 6.0 BHP One 4.8 BHP
33	Two 3.0 BHP
33 Dual Footblaster	Three 3.0 BHP
32 Single Footblaster	One 4.8 BHP One 3.0 BHP

## Relax, You Deserve It

Release stress and send your worries away as you relax in your own personal lounge. Enjoy the open seating with friends or family in the adaptable Nevis.

This spa has big features, but will fit indoors or out.

# Nevis

84 x 78 x 34 in.  
213 x 198 x 86 cm



45 Nevis | Acrylic: White Pearl



# Antigua

84 x 84 x 36 in.  
213 x 213 x 91 cm



52 Antigua | Acrylic: White Pearl



## Specifications

Seating Capacity	6	
Dry Weight	845 lbs	383 kg
Filled Weight	3845 lbs	1744 kg
Water Capacity	375 gal	1419 L

Jets	Pumps : 1-Speed
52	Two 6.0 BHP
51 Dual Footblaster	One 6.0 BHP One 4.8 BHP One 3.0 BHP
45	Two 4.8 BHP
45 Dual Footblaster	Two 4.8 BHP One 3.0 BHP
44 Single Footblaster	One 6.0 BHP One 4.8 BHP
33	Two 3.0 BHP
33 Dual Footblaster	Three 3.0 BHP
32 Single Footblaster	One 4.8 BHP One 3.0 BHP

## Specifications

Seating Capacity	7	
Dry Weight	845 lbs	383 kg
Filled Weight	4045 lbs	1835 kg
Water Capacity	400 gal	1514 L

Jets	Pumps : 1-Speed
52	Two 6.0 BHP
49 Dual Footblaster	One 4.8 BHP One 6.0 BHP One 3.0 BHP
46	Two 4.8 BHP
45 Dual Footblaster	Two 4.8 BHP One 3.0 BHP
44 Single Footblaster	One 6.0 BHP One 4.8 BHP
33	Two 3.0 BHP
33 Dual Footblaster	Three 3.0 BHP
32 Single Footblaster	One 4.8 BHP One 3.0 BHP

# Captiva

84 x 84 x 36 in.  
213 x 213 x 91 cm



52 Captiva | Acrylic: White Pearl





# Barbados

91 x 91 x 36 in.  
231 x 231 x 91 cm



61 Dual Footblaster | Acrylic: White Pearl



## Specifications

Seating Capacity	5	
Dry Weight	908 lbs	412 kg
Filled Weight	4508 lbs	2045 kg
Water Capacity	450 gal	1703 L

Jets	Pumps : 1-Speed
63	Two 6.0 BHP
61 Dual Footblaster	Two 6.0 BHP One 3.0 BHP

## The Double Lounger

The Barbados gives you plenty of reasons to relax alone or with friends and family. With multiple jet arrangements, two loungers and open barrier seating, this spa is designed for you and your guest to lounge back and enjoy a soothing yet powerful hydrotherapy experience.



## Specifications

Seating Capacity	6	
Dry Weight	947 lbs	430 kg
Filled Weight	4547 lbs	2062 kg
Water Capacity	450 gal	1703 L

Jets	Pumps : 1-Speed
62	Two 6.0 BHP One 3.0 BHP
61 Dual Footblaster	Two 6.0 BHP One 3.0 BHP
52	Two 6.0 BHP
51 Dual Footblaster	One 6.0 BHP One 4.8 BHP One 3.0 BHP
45	Two 4.8 BHP
45 Dual Footblaster	Two 4.8 BHP One 3.0 BHP
44 Single Footblaster	One 6.0 BHP One 4.8 BHP
33	Two 3.0 BHP
33 Dual Footblaster	Three 3.0 BHP
32 Single Footblaster	One 4.8 BHP One 3.0 BHP

# Grand Bahama

91 x 91 x 36 in.  
231 x 231 x 91 cm



61 Dual Footblaster | Acrylic: White Pearl



# Grand Cayman

91 x 91 x 36 in.  
231 x 231 x 91 cm



62 Grand Cayman | Acrylic: White Pearl



## Specifications

Seating Capacity	7	
Dry Weight	947 lbs	430 kg
Filled Weight	4747 lbs	2153 kg
Water Capacity	475 gal	1798 L

Jets	Pumps : 1-Speed
62	Two 6.0 BHP One 3.0 BHP
61 Dual Footblaster	Two 6.0 BHP One 3.0 BHP
52	Two 6.0 BHP
51 Dual Footblaster	One 4.8 BHP One 6.0 BHP One 3.0 BHP
46	Two 4.8 BHP
45 Dual Footblaster	Two 4.8 BHP One 3.0 BHP
44 Single Footblaster	One 6.0 BHP One 4.8 BHP
33	Two 3.0 BHP
33 Dual Footblaster	Three 3.0 BHP
32 Single Footblaster	One 4.8 BHP One 3.0 BHP

## Specifications

Seating Capacity	9	
Dry Weight	1000 lbs	454 kg
Filled Weight	2064 lbs	4551 kg
Water Capacity	550 gal	2082 L

Jets	Pumps : 1-Speed
71	Two 6.0 BHP One 3.0 BHP

## The First 9 ft. Island Spas Model

Release stress and send your worries away while sitting in the new **Circular Bench** that offers additional seating for a total of 9 seats. While relaxing, rejuvenate tired hands and boost circulation with the round, pearl sized nodes **Hand Massage Tracks** that are integrated into the hydrotherapy seat and the relaxation lounger.



# Isla Margarita

108 x 91 x 36 in.  
274 x 231 x 91 cm



71 Isla Margarita | Acrylic: White Pearl

# Bimini

91 x 132 x 36 in.  
231 x 335 x 91 cm



Bimini 72 | Acrylic: Silver Marble



## Specifications

Seating Capacity	10	
Dry Weight	1258 lbs	571 kg
Filled Weight	5898 lbs	2675 kg
Water Capacity	580 gal	2195 L

Jets	Pumps : 1-Speed
72	Two 6.0 BHP One 4.8 BHP
52	Two 6.0 BHP

## The Ultimate Island Spa

There is so much to love about owning our largest Island Spas model. Two full-body lounge seats are handcrafted and molded to support your body in a natural position. The patented, helix inspired jet design provides a double spiral jet pulsation for the ultimate massage. Multiple air and diverter controls allow air variation and altered pressure to adjust massage and comfort level. The cascade waterfall with LED lighting options will turn any backyard into an oasis.

\*Bimini acrylic shell available only in: Silver Marble and Sierra



# DESIGN YOUR SPA

## STANDARD

### Solid



White

### Granites



Sierra

### Marbles



Silver Marble



Malibu Surf

### Gemstone



Summer Sapphire

## UPGRADE



Oyster Opal

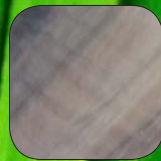
### Luster Swirls



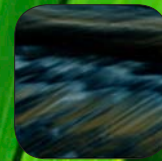
Midnight Opal



Oceanwave Opal



Tuscan Sun



Midnight Canyon



Storm Clouds

### Metallix



Winter Solstice



Glacier Mountain

## UPGRADE

### Minerals

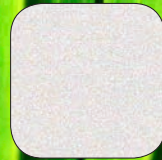


Cinnabar

### Luster



Mineral White



White Pearl

*Lucite*® SPA

Artesian Spas proudly offers cast acrylic shells with an extra level of protection against mold and mildew by using Lucite®.

## KINGWOOD CABINETS



Red



Grey

## COVERS



Red



Grey

## STEPS



Red

# COMBINATION OPTIONS

## ROCK CABINETRY



Taupe



Java



Black



Antique



Sandstone



Javastone

*Matching steps sold separately.*

Upgrade your cover to **ProGuard** for added insulation and protection.



Taupe



Java



Black

### ProGuard Covers

This cover adds insulation value to the spa in a region of extreme snow and cold. ProGuard covers add approximately two inches of insulation above the standard cover. Relax, knowing the spa is safe and the heat is insulated, even in severe weather conditions.

These durable steps can be matched to your cabinet of choice.



Grey



Taupe



Java



Black



## WATER FEATURES & LED LIGHTING OPTIONS



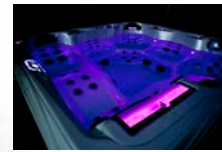
**Multicolor 10 LED**  
Includes: 1-3.5" LED Light

**DynaStar LED**  
Includes: 4-2" LED, 1-3.5" LED

**DynaPoint LED**  
Includes: 4-2" LED, 1-3.5" LED, 2 Cabinet Lights, Illuminates Pillowfall and/or Tranquility Fall

**DynaBrite LED**  
Includes: 6-2" LED, 1-3.5" LED, 2 Cabinet Lights, Illuminates Air Controls, Pillowfall and Tranquility Fall

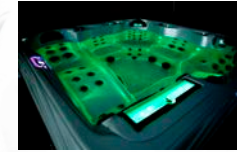
### Chromatherapy: Color and Light Therapy



Red:  
Warmth  
Passion



Blue:  
Peace  
Calmness



Green:  
Growth  
Harmony

Multicolor 10 LED



Tranquility Fall



Pillowfall



Cabinet Light





# SPA FEATURES

## STANDARD FEATURES:

### • Warranty

Island Spas	Island Spas ELITE
Lifetime Structure 5 Year Surface 3 Year Plumbing, Electric, Parts/Labor*	Lifetime Structure 7 Year Surface 5 Year Plumbing, Electric, Parts/Labor*
2 Year Cabinet	2 Year Cabinetry

- **Crescent Helix SS Jet Design**
- **Dual Footblaster** (ELITE Only)
- **2 DirectFlow® Personal Controls** (ELITE Only)
- **Heater**
  - 5.5 kW North America (60 Hz)
  - 3.0 kW Export (50 Hz)
- **Advanced Digital Control System**
  - Color LCD Panel
  - WiFi Ready\*\*
  - Multi-language
  - User Friendly Interface
- **4 in. Maximum Tapered ASTM Cover**
- **Circulation System with Microfiltration**
- **Full Foam with ABS Bottom**
- **12 V - 5 in. Spa Light**
- **Ozone/Crystal ProPure™ Ready**

## OPTIONAL FEATURES:

### • Water Features

- Pillowfall
- 12 in. Tranquility Fall\*\*\*
- Cascade (Bimini Only)

### • Lighting Features

- Multicolor 10 LED
- DynaStar LED
- DynaPoint LED
- DynaBrite LED

### • Water Purification

- Ozonator
- Crystal ProPure™ Ozone Mixing Chamber
- Crystal AOP ProPure™ Advanced Oxidation
- FROG® @ease™ with SmartChlor™

### • Green Technology

- Nature2® Cartridge

### • Protection

- PermaBase ABS Pan\*\*\*
- (Seals underside of spa completely)*

### • Spa Cover Upgrades

- ProGuard 6 in. Maximum Tapered ASTM Cover

### • Jets & Footblaster

- Pulsating Wave Option (Not available on 33 jet count, single footblaster and ELITE models)
- Side Foot Dome (Captiva 52,46,33 Only - MicroSilk N/A)
- Single Footblaster (Bahama 44, 32/Cayman 44, 32/Antigua 44,32/Nevis 32) Captiva 44/Nevis 44 Only)
- Dual Footblaster (Barbados 61/Bahama 61,51, 45 & 33/Cayman 61, 51, 45,33/Antigua 51, 45,33/Captiva 49, 45,33/Nevis 45,33 Only)
- Clear Footblaster\*\*\* (Requires DynaPoint or DynaBrite)

### • Stereos

- Premium Infinity® Sound System by Harman
- Optional: Wireless Remote (Premium Infinity Only)
- bba™ Bluetooth Audio
- Bluetooth® Music Experience
- Optional: (2) 3 in. Patio Speakers

### • Additional Options

- Worldwide WiFi App Module
- 5 Year Warranty Upgrade
- (Plumbing, Electric, Parts/Labor\* Island Spas Only)
- MicroSilk (Antigua 45,33 and Captiva 46,33 Only)

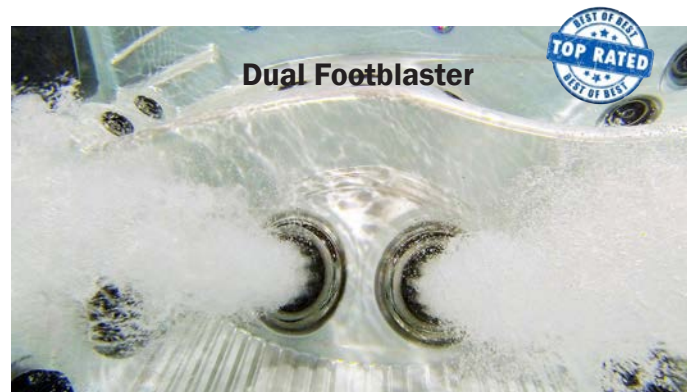
\*Certain components are not covered under this warranty.

\*\*Additional WiFi module required.

\*\*\*Not available on Bimini.



Pillowfall



Dual Footblaster



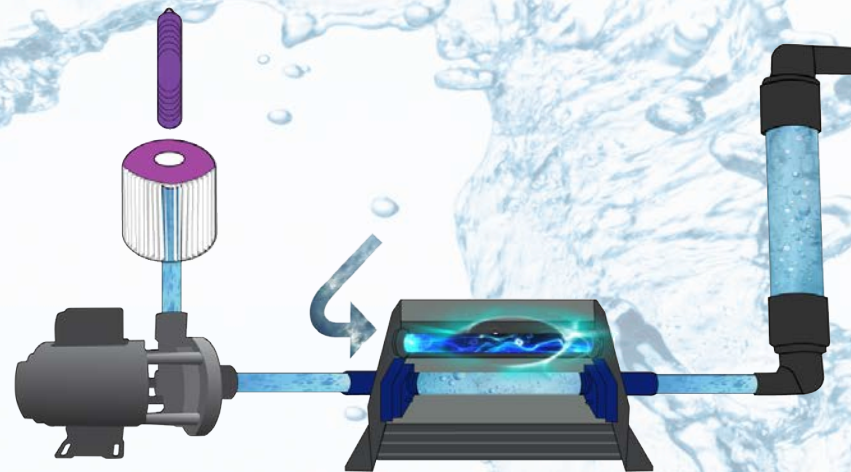
Tranquility Fall

# WATER PURIFICATION

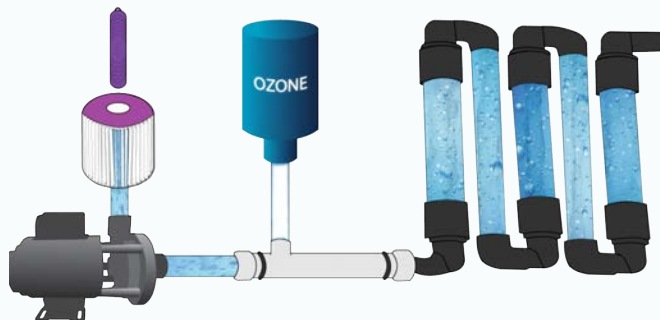
The **Crystal AOP™**, **Crystal ProPure™**, and the **FROG® @ease™** In-Line System are some of the options available to keep the water in your Island or Island Elite spa clean and pure. Utilizing various innovative water purification technologies, these systems catch debris, eliminate bacteria, and make maintenance of your spa much easier.



UVC + Ozone + ProPure™ Mixer



The Crystal AOP™ ProPure Advanced Oxidation combines the **Nature2®** option, **Microfiltration**, high efficiency **Circulation Pump**, **UVC**, **Ozone** and **ProPure™ Mixer** to create the ***MOST ADVANCED OXIDATION PROCESS (AOP) FOR WATER PURIFICATION.***



Ozone + Dynamic Injector  
+ ProPure™ Mixing Chamber

Crystal ProPure™ Water Purification combines the **Ozonator**, **Dynamic Injector**, and the **ProPure™ Mixing Chamber**. All components work together to create ***AN INNOVATIVE WATER PURIFICATION SYSTEM.***



# @ease™

Artesian Spas brings you the patented in-line FROG® @ease™ system. This breakthrough system in water-care combines Fresh Mineral Water™ with SmartChlor™ Technology to provide cleaner, clearer and softer spa water that's far easier to take care of.

Up to 75% **LESS CHLORINE**

Only Shock **ONCE** a Month

**SELF REGULATES** for continuous clear water

Easy on hot tub surface with **LESS ODORS**

**CLEANER** because it kills bacteria 2 ways

Minerals condition the water for a **SOFTER** feel

**MINERAL  
CARTRIDGE  
LASTS 4 MONTHS**

**SMARTCHLOR™  
CARTRIDGE  
LASTS 3-4 WEEKS**



**DICHLOR** - The free chlorine drops when bathers enter the water



**SMARTCHLOR** - The free chlorine stays at a consistent level because it is self-regulating

**THE SMARTCHLOR™ DIFFERENCE**



# ARTESIAN SPAS™

EXPERIENCE THE ULTIMATE

*Corporate Office:*  
4720 N. Lamb Blvd. | Las Vegas, Nevada 89115  
[www.ArtesianSpas.com](http://www.ArtesianSpas.com)



## Built in the USA for the World:

Artesian Spas are sold in the following countries: Albania, Andorra, Angola, Armenia, Australia, Austria, Azerbaijan, Belarus, Belgium, Bosnia, Bulgaria, Canada, Croatia, Cyprus, Czech Republic, Denmark, Dubai, Estonia, England, Finland, France, Georgia, Germany, Greece, Hungary, India, Ireland, Israel, Italy, Kazakhstan, Korea, Latvia, Liechtenstein, Lithuania, Luxembourg, Macedonia, Malta, Mexico, Moldova, Monaco, Montenegro, Netherlands, New Zealand, Norway, Panama, Poland, Portugal, Romania, Russia, San Marino, Scotland, Serbia, Singapore, Slovakia, Slovenia, Spain, Sweden, Switzerland, Singapore, Turkey, Ukraine, United States, Uruguay, Wales.

## SPA QUALITY CHECKLIST

- Energy Efficient Circulation System that Uses Only 115 Watts
- Full Flow Plumbing that Reduces Flow Resistance
- High Density Icynene® Foam Insulation Between the Cabinet and Shell
- Lifetime Structure Warranty
- Wireless Control Capability
- Built in the USA